



PFSC

Membership Manual

CONSERVATION PLEDGE

I GIVE MY PLEDGE AS AN AMERICAN
TO SAVE AND FAITHFULLY DEFEND
FROM WASTE
THE NATURAL RESOURCES OF MY
COUNTRY
ITS AIR, SOIL, MINERALS,
FORESTS, WATERS AND WILDLIFE
IN ALL ASSEMBLIES OF AMERICANS.
LET THIS PLEDGE RING OUT!

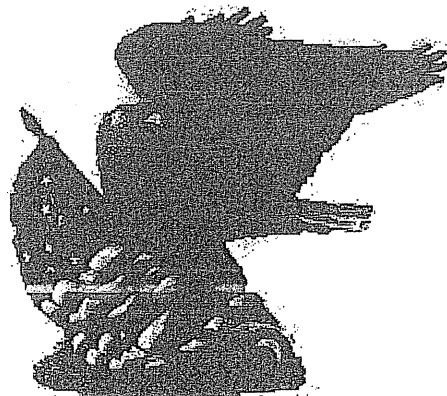


Table of Contents

Organizational Purpose	Section 1
• Why PFSC?	Page 4
• Why Join PFSC?	Page 6
• Twenty-six Reasons to Join	Page 8
• Benefits and Activities of Membership	Page 10
• Types of Membership	Page 10
• Membership Recruitment Incentive Program	Page 10
• Dues Structure	Page 11
• Organizational Chart	Page 12
Standards for Affiliation – Structure	Section 2
• Clubs	Page 13
• Counties	Page 13
• Divisions	Page 14
Standards for Affiliation	Section 3
• Standards	Page 15
Delegate Responsibilities	Section 4
• The Club Delegate	Page 17
• The County Delegate	Page 17
• The Committee Representative	Page 18
Miscellaneous Information	Section 5
• Commissioner Endorsements	Page 18
• How to Write a Resolution	Page 19
• Resolution Form	Page 20
• Communication Connection	Page 21
• Dates to Remember	Page 22
• PFSC Directors List	Page 23
• Membership Application	Page 24

WHY PFSC?

Why should I be a member of the Pennsylvania Federation of Sportsmen's Clubs? Why should our club join? It's going to cost you some hard-earned dollars to belong to the PFSC, and you're right to ask questions. Here are the answers to some of the questions we've heard most often.

WHY DO WE NEED A STATEWIDE SPORTSMEN'S ORGANIZATION?

The answer to this question is driven home to us every time we try to contact another state about an issue which concerns sportsmen. It is sometimes a frustrating, if not impossible, task to contact individuals from local sportsmen's organizations or clubs concerning an issue of interest in other states. Many PFSC members have returned home from out-of-state hunting trips commenting that the PFSC is looked upon with envy by sportsmen who wish there was a statewide organization, like ours, where they live. In addition, more and more statewide sportsmen's groups across the country have seen the need to establish a state office, as vested interest groups, which work against us, pay lobbyists \$150,000 per year, on one issue alone! While there are many good special interest groups competing for your dollars, PFSC is the only statewide sportsmen's organization looking out for sportsmen's rights by providing a constant presence on Capitol Hill and with our resource agencies.

WHY SHOULD THE FEDERATION HAVE A STATE OFFICE AND A FULL-TIME STAFF?

One of the most compelling reasons to join the Federation is because PFSC is the only statewide sportsmen's organization that has a state office staffed by paid employees. All other statewide sportsmen's organizations in Pennsylvania have strictly volunteers charged with running the organization. However capable, volunteers' first concern is making a living for themselves and their family, while taking care of sportsmen's issues in their spare time. In today's political world, volunteers aren't enough. Protecting the future of hunting, fishing, trapping and natural resources that support these activities is no longer a part-time job. It requires the full attention and efforts of professional people who are there to do one thing: look after the sportsman's interest.

OK, WHY DOES IT COST SO MUCH TO RUN THE PFSC?

Currently, the PFSC has an approximate budget of under \$300,000 per year. Why so much? Be assured there are no fat expense accounts in PFSC's yearly budget. (Most statewide Non-Profits operate on a budget several times what we do.)

So where does the money go? Of course, a portion of the money is used to employ the professional staff, which is capable of serving our club members in an efficient manner. (Our employees could be making much better salaries working for other companies, but they believe in our cause, so they are willing to accept the sacrifice.) However, the majority of our budgeted expenses go toward the following:

- Responding to over 11,000 pieces of mail and generating over 20,000 pieces of outgoing mail each year
- Responding to incoming phone calls and e-mails requesting information
- Producing and publishing the ON TARGET magazine to keep members informed
- Tracking, reporting, and monitoring legislation and regulations that could affect sportsmen
- Attending and testifying at legislative and resource agency hearings and meetings
- Providing a constant presence on Capitol Hill and with our Resource Agencies
- Providing a web site and email alerts to communicate with sportsmen
- Legal fees to fight local ordinances and other laws that are anti-shooting or against sportsmen's activities
- Conducting an annual legislative trap shoot and dinner and other educational events
- Rent, maintenance and operating expenses of the PFSC office building

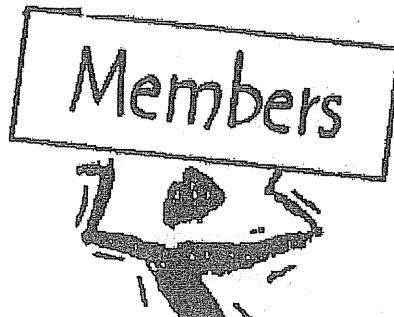
It's important to note, that PFSC's Board of Directors are all volunteers and do not receive any reimbursement for travel or meeting expenses. When speaking on behalf of the PFSC at legislative hearings, regular meetings of the Game and Fish and Boat Commissions, and other meetings, they are doing so on their own dime. These dedicated people use personal days and vacation time to represent PFSC at these functions.

HOW DO I JOIN THE PFSC?

If you or your club is interested in becoming a part of the oldest and largest sportsmen's organization in Pennsylvania, please contact our state office. The PFSC staff will see that you or your club is contacted by a PFSC representative to give you the specifics on how to affiliate.

Contact us at:

PFSC
2426 North Second St.
Harrisburg, PA 17110-1104
Phone: (717) 232-3480
FAX: (717) 231-3524
E-mail: info@pfsc.org
Website: www.pfsc.org



After joining, each club will receive a club certificate. The club president, secretary and delegate will receive the ON TARGET magazine and many more exciting items!

To help PFSC keep your club better informed, please provide at least one e-mail contact address.

Come join the largest sportsmen's organization in Pennsylvania –

TOGETHER WE CAN MAKE A DIFFERENCE!



Promoting & Protecting
Our Outdoor Heritage,
2nd Amendment Rights
and Our Resources

Hunters, trappers, anglers — your voice for your sport and our natural resources needs to be heard!

If you believe in protecting, promoting, and preserving our outdoor heritage, our resources and our 2nd Amendment Rights, then we need you as a member of the PFSC. Your membership will help us send a strong message with our numbers.

Why Join PFSC?

It's real simple. If you enjoy partaking in the many wonderful opportunities that our outdoor heritage and resources provide, then you should belong to the #1 organization out there fighting full-time to preserve, promote and protect your rights and privileges to do so. To continue doing this, we need your support. We need to be able to count you as a member, and we need your financial support. That's the bottom line.

At no time in recent memory have there been so many controversial issues impacting the hunting, trapping, fishing and shooting communities. From the continued threats of a merger of the Fish and Boat Commission with the Game Commission to the constant threat of infringement of our 2nd Amendment Rights, from the quality deer management program to protected status for native brook trout streams, to access to areas to hunt and fish, the Pennsylvania Federation of Sportsmen's Clubs is committed to listening to and representing its grass roots members, and looking out for their best interests.

There are serious threats to the future of hunting, trapping, angling, gun ownership, and the environment in Pennsylvania. PFSC has fought and won many battles since they were formed in 1932. Many issues were critical to our heritage and the resources that provide for our outdoor recreation. PFSC was successful because sportsmen & women across the state stood up, voiced their opinions, paid their dues, and remained firm in their commitment so that we could enjoy hunting, fishing, trapping and many other wildlife related activities today. Now it is our turn to stand up & be counted.

Too many ask "what's in it for me?" But it is not just about you & me. It is about our children and our children's children; the kids growing up today, and those yet unborn. They deserve the opportunities, privileges and rights we have enjoyed and appreciate. It is our responsibility to make every possible effort to assure these opportunities and resources are there for future generations.

If those before us had not accepted and acted on that responsibility, we would not have the opportunity to participate and enjoy the many outdoor related activities we cherish today.

As a sportsman you have a powerful voice; make sure it gets heard!

When we visit Capitol Hill and to our Resource Agencies, you need to be counted!

Join PFSC NOW!

The future of trapping, hunting, fishing and firearm ownership is threatened today like never before.

If you hunt, trap, fish, shoot, or boat, and care about the resources that provide for all the great opportunities we now enjoy, then you should be supporting the organization on the front lines fighting to protect our Outdoor Heritage, 2nd Amendment Rights & our Resources.

Yes, there are many good special interest organizations fighting for their specific interests, but most of those other special interest groups are not active politically. Before you can hunt, trap or fish for whatever your preferred method and species may be, you first have to be able to own a gun, bow, trap or fishing pole. You have to be allowed to harvest that species and even more important, have that species available to harvest. And you have to have a place to harvest that species. It takes extensive political action to maintain, defend and improve those rights & privileges. It takes money & manpower to maintain that level of political action.

History shows that PFSC has made positive impacts in the past, and continues to do so today. PFSC has been successfully defending your hunting, trapping, fishing and shooting heritage and our resources for 79 years. To continue this important mission, we need your help. We need to unite all sportsmen & women, regardless of the tools they use, or the species they hunt, trap or fish. We need to greatly increase our membership numbers. Yes, there's strength in numbers!

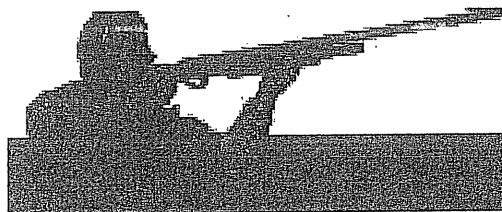
So why should you be supporting PFSC?

Because today, PFSC is the most respected and listened to sportsmen's organization out there. And that is because of the way we do business. We really do listen to our members and act accordingly. And we really do look out for the best interest of all sportsmen, women and conservationists and we put the resource first.

PFSC provides a constant presence on Capitol Hill and with our resource agencies. But we can't speak or provide that presence if we don't have the financial stability needed to do so. Of all the money spent on hunting, trapping, fishing or shooting, your club membership and \$25 individual memberships could be the best investment you can make for the future of our outdoor heritage in Pennsylvania.

Are you willing to stand up and be counted and help PFSC continue to fight for you and our future generations?

If you don't, who will?



26 REASONS TO JOIN THE PENNSYLVANIA FEDERATION OF SPORTSMEN'S CLUBS

- 1) Fought for sportsmen's rights to fish in the Lehigh River, a state navigable waterway
- 2) Passed a law that protects shooting ranges from closure due to noise complaints, a problem that affected up to 60 percent of PFSC-affiliated clubs, and could affect up to 95 percent of shooting ranges in Pennsylvania, as a result of rapid urban development
- 3) Tested the shooting range issue by joining an affiliated club in a lawsuit that tested the above law in the courts and kept the club's ranges from being closed due to noise complaints. This precedent-setting case was won in July, 1992.
- 4) Won another precedent-setting lawsuit (Duff Decision) that prevented local governments from prohibiting legal hunting during open seasons, proving once and for all that the Pennsylvania Game Commission and Wildlife Code cannot be preempted by local laws where legal hunting can be carried out
- 5) Stopped commercial development in state parks by polling citizens door-to-door and presenting those results to the legislature. PFSC was a major force in the passage of "Key '93" legislation by generating over 1,200 letters in one week to one legislator, asking him to report the bill out of committee. This was accomplished by club activity coupled with a door-to-door field canvass.
- 6) Helped pass S.B. 181, which will guarantee that conservation education is taught to the public in our schools' and state parks' natural history programs
- 7) Worked to prevent construction of the Dock Street Dam, which the Fish & Boat Commission, EPA and U.S. Fish and Wildlife Service all agree would destroy one of the finest natural smallmouth bass fisheries in the Susquehanna River
- 8) Support and Sponsor Youth Field Days through County Federation affiliates
- 9) Amended the Small Games of Chance Law that threatened to close off all fund-raising efforts that dealt with raffles in every club across Pennsylvania. Currently working to increase the prize limits for payouts
- 10) Brings the collective power of almost 100,000 dues-paying members to bear on issues which directly affect outdoor enthusiasts to insure hunting, fishing, trapping and the natural resources that support these activities will be here for future generations
- 11) Annually distributes special editions of On Target to all students taking the PGC's Hunter, Trapper Education course, free of charge
- 12) Diverted attempts to consider state game lands and other public lands as potential sites for waste storage and disposal
- 13) Won the fight (as intervenors) to restore the passageway of the American shad to its natal waters in the Susquehanna River. PFSC's president was the only non-government representative who signed the fish passageway agreement with Philadelphia Electric Company and Governors of two states

14) CAP and Habitat 2000 programs – A new program brought about by PFSC that will enable hunters and anglers to contribute additional monies to the Fish & Boat and Game commissions for stream access and game lands acquisition. Supported programs like Growing Greener that included funding for our resource agencies.

15) A Legislative Liaison, registered as a lobbyist on Capitol Hill, to represent PFSC sportsmen every day of the week

16) Helped pass a bill that would create a Youth Hunter and Angler License Plate to provide funding for youth outdoor education programs

17) Supported legislation to expand the Recreation Use of Land and Water Act, enacted in 1966, to encourage landowners to make their properties available for public recreation. Worked to strengthen the Act to make sure landowners are protected from liability from the acts of recreational users on their property.

18) Supported reclassifying sections of Pine and Elk creeks from High Quality to Exceptional Value waters to preserve the ecological and recreation significance provided to the Commonwealth

19) Passage of Pennsylvania's solid waste bill, which included mandatory recycling

20) Successfully opposed "takings" legislation that would weaken wetlands protection

21) Stopped HB 2181 – legislation that would have taken away control of our game lands from the PGC & placed them under IRRC

22) Helped pass the Mentored Youth Hunting Bill & Regulations that will allow mentors to take youth under the age of 12 for a one-on-one hunting experience for squirrels, groundhogs and spring turkey

23) Helped pass legislation for increased penalties for wildlife violators, that includes jail time for habitual violators and legislation allowing the Game and Fish and Boat Commissions to join the Interstate Wildlife Violators compact which will allow states to share information to prevent wildlife abusers from hopping from state to state

24) Supporting passage of Castle Doctrine legislation to allow the use of force to protect yourself and loved ones in any place you are lawfully allowed to be, including your vehicle

25) Always protecting your 2nd Amendment Rights by adamantly opposing restrictive legislation for law-abiding citizens

26) Keeping a constant presence on Capitol Hill and with our Resource Agencies



BENEFITS AND ACTIVITIES OF PFSC MEMBERSHIP

- Become an active participant in developing PFSC policies on fishing, hunting, trapping, shooting and conservation issues
- Have input into seasons, bag limits, sizes and creel limits through PFSC representation at all meetings of the PA Game Commission and the PA Fish & Boat Commission
- Attend two PFSC conventions each year, where county delegates determine PFSC policies, positions and legislative priorities.
- Receive copies of our official publication On Target (PFSC bimonthly newsletter), and receive our email news alerts
- Through the PFSC resolution process, you can gain statewide support for those issues most important to you
- Have the PFSC Legal Fund at your disposal, should you or your club become involved in a lawsuit that might set a precedent regarding the outdoor activities of sportsmen. Our Legal Fund has spent thousands of dollars fighting gun control ordinances and defending our right to fish in navigable waters.
- Become a part of one of the oldest & largest sportsmen's organization in Pennsylvania -- dedicated to protecting the natural resources of Pennsylvania for generations to come

TYPES OF PFSC MEMBERSHIP

AFFILIATED CLUB -- A club shall be any bona fide conservation organization with a membership of 10 or more individuals and approved in accordance with the PFSC By-laws

INDIVIDUAL MEMBER -- Any individual who pays the required dues to the PFSC. Includes Contributing, Life, Next Generation, and E-Members

STATEWIDE ORGANIZATIONS -- Any statewide organization that pays the required dues to the PFSC

CORPORATE / BUSINESS MEMBERSHIP - Any corporation or business that pays the required dues to the PFSC

MEMBERSHIP RECRUITMENT INCENTIVE PROGRAM

Clubs, Counties, Divisions who solicit individual memberships for PFSC earn benefits.

Example: Collect the appropriate dues, mail the application and \$23 to PFSC, and keep \$2 for your club.

\$25 Membership - Club keeps \$2
\$50 Membership - Club keeps ~~\$2~~ 4.00
\$300 Life Membership - Club keeps \$5

Contact the state office for more details

Pennsylvania Federation of Sportsmen's Clubs

State Dues Structure and Rates Chart 2011

Club & Association Affiliations

<u>Number of Members</u>	<u>Rate</u>
10-19	\$50
20-29	\$80
30-39	\$110
40-49	\$140
50-59	\$170
60-69	\$200
70-79	\$230
80-89	\$260
90-149	\$290
150+	\$290 + \$1 for each member over 149
984+	\$1125 cap!

Examples:

- If your club has 200 members, you pay \$341
 - 200-149=51
 - 51x\$1=\$51
 - \$290+\$51=\$341
- If your club has 500 members, you pay \$641
- If your club has 950 members, you pay \$1091
- If your club has 984+ members, you pay \$1125

Individual Membership

<i>E-MEMBER</i>	<i>\$15</i>
Next Generation Member	\$10
Individual Member	\$25
Contributing Member	\$50
Life Membership	\$300

Individual Membership Rebate Program for Clubs, Counties, Divisions & Statewide Orgs:

For each \$25 Individual membership your group collects for PFSC, you may keep \$2 and forward \$23 to the state. (\$4 from \$50 memberships & \$5 from Life memberships) Note: Any payments made directly to PFSC will not result in a payment back to a club or group, so you must physically collect the payment and take the \$2 out before submitting the balance to the state.

Privacy Statement

The PFSC respects the personal information of our members and will at no time, sell, trade or giveaway your contact information. We may if requested by a paying sponsor, administer the mailing of special offers or discounts to our members that we deem would be beneficial to our members!

Statewide Organizations

Statewide organizations shall be any bona fide statewide conservation organization with a membership of 500 or more, and whose mission is consistent with that of the Federation. Acceptance as a member will be contingent upon a majority vote of the Delegates. Statewide organizations in good standing shall elect a Delegate and Alternate Delegate to represent them to the Federation.

With Voting Privileges

<u>Number of Members</u>	<u>Rate</u>
Less than 1,000 members	\$1,100
More than 1,000 members	\$1,600

Without Voting Privileges

<u>Number of Members</u>	<u>Rate</u>
500 or more members	\$600

The official registration & financial information of the PA Federation of Sportsmen's Clubs, Inc. may be obtained from the PA Dept of State by calling toll free within PA 1-800-732-0999. Registration does not imply endorsement.

PFSC ORGANIZATIONAL CHART / STRUCTURE

Pennsylvania Federation of Sportsmen's Clubs, Inc. Board of Directors

President*

First Vice-President* Second Vice-President*

Secretary* Treasurer*

Past President*

Representative from each of the 8 divisions

One member-at-large delegate for each 20,000 Individual members

Delegates from member Statewide Orgs

*Member of the Executive Committee

8 Divisions

Chair, Vice Chair, Secretary, Treasurer

One Representative to Each Standing Committee

Delegate from Each County Affiliate

NORTH WEST

Butler, Clarion, Crawford, Erie, Forest,
Lawrence, Mercer, Venango

NORTH CENTRAL

Cameron, Centre, Clearfield, Clinton, Elk,
Jefferson, McKean, Potter

NORTH EAST

Carbon, Lackawanna, Luzerne, Monroe,
Pike, Susquehanna, Wayne, Wyoming,

CENTRAL

Bradford, Columbia, Lycoming, Montour,
Northumberland, Snyder, Tioga, Union

SOUTH CENTRAL

Bedford, Blair, Fulton, Huntington, Juniata,
Mifflin

SOUTHWEST

Allegheny, Armstrong, Beaver, Cambia,
Fayette, Greene, Indiana, Somerset,
Washington, Westmoreland

SOUTHERN

Adams, Cumberland, Dauphin, Franklin,
Lancaster, Lebanon, Perry, York

SOUTHEAST

Berks, Bucks, Chester, Delaware,
Lehigh, Montgomery, Northampton,
Philadelphia, Schuylkill

COUNTY FEDERATIONS

President, Vice President, Secretary, Treasurer

Delegate from Each PFSC Affiliated Club

PFSC Individual Members

INDIVIDUAL MEMBERS

Individual, Contributing, Life,
Next Generation, E-Member

****All County & Division Officers must be PFSC Individual Members****

STANDARDS FOR AFFILIATION CLUBS

1. A club consisting of 10 or more members is eligible to join the PFSC
2. The club must be a bona fide sportsmen's and/or conservation organization dedicated to the wise use and management of our natural resources. The club must support the policies of the PFSC
3. In order to have voting rights, which are at the county level, a club must pay county, division and state dues, the amounts of which are set by the respective organizational levels
4. The club will pay state, county and division dues to their respective County by February 1 of each year. The number of members for purposes of determining dues shall be determined as the number of members in good standing as of December 31 of the prior year.
5. A club desiring to affiliate with PFSC, and located in a county without an existing county affiliate, will become the county affiliate for their county
6. The club delegate is responsible for completing an updated credential sheet each year
7. Each club is requested to submit a list of ten (10) names and addresses of their members at the time that the dues are submitted to the County. The entire membership list would be greatly appreciated. While PFSC will never sell or give out the list, we may use it occasionally to mail out beneficial information or advertising materials for a corporate sponsor. If possible, please provide the list to the state office electronically by e-mailing it to pfscorg@comcast.net.
8. Each club shall elect a delegate and alternate delegate to represent the club at meetings of the county affiliate, as required by the County by-laws
9. Each club will receive a certificate of membership from the State Office
10. All clubs must provide at least one email contact so they can receive alerts and updates from the state and be able to respond to issues in a timely manner

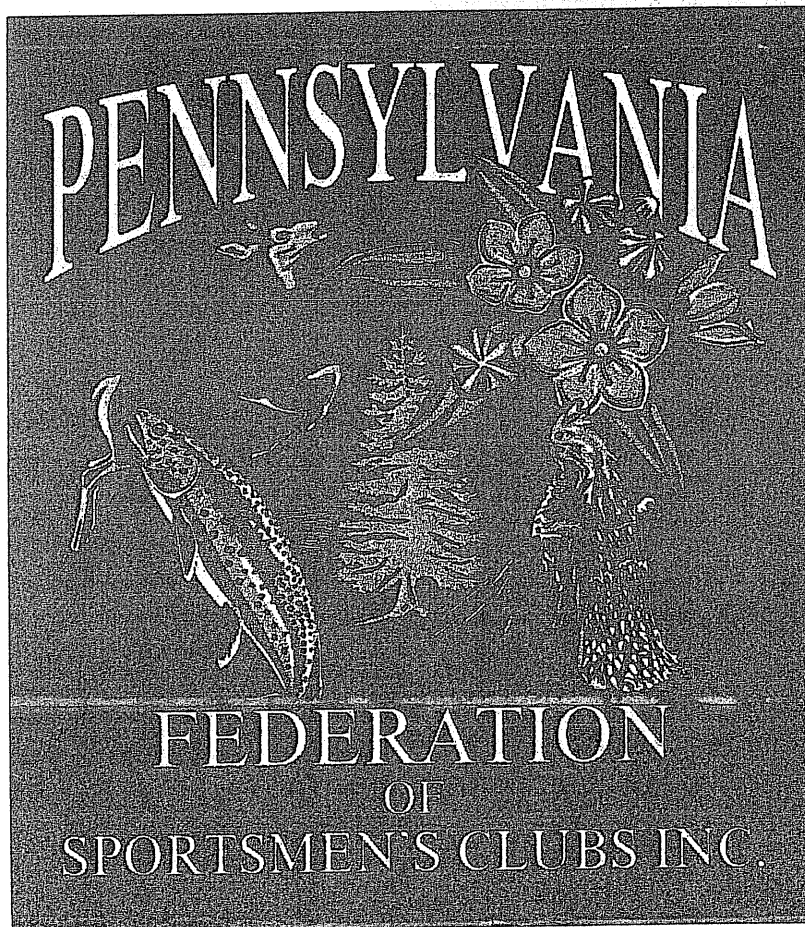
COUNTIES

1. Each county will be required to validate club membership credentials for each club within that county
2. The county will collect the PFSC state dues and division dues and forward them to PFSC by Feb. 15
 - After verifying the number of members in each club in the county corresponds with the amount of dues paid, the county secretary (or other designated officer) will forward copies of the credential sheets and the dues payments from each club to the state office
 - Copies of the credential sheets and division dues payment from each club shall also be sent to the division treasurer
3. Any club mailing lists received should be forwarded to the state office
4. For unaffiliated counties, or counties with no member clubs, 10 individual members may appeal to the PFSC Board of Directors to form a county affiliate in that county
5. Each county affiliate will be responsible for electing officers and appointing a delegate and alternate delegate to represent the county on the division and state levels
6. All county officers must be PFSC Individual members
7. Any change in county officers or delegates must be reported to the State Office
8. County Delegates are responsible for contacting delinquent clubs to deal with membership issues
9. Counties which fail to pay all required dues or submit proper credential sheets, will not be recognized on the state level as being affiliated, even if state club dues have been paid, and thus will not be able to vote during delegate sessions
10. All counties must provide at least one email contact so they can receive alerts and updates from the state and be able to respond to issues in a timely manner

STANDARDS FOR AFFILIATION

DIVISIONS

1. The division will elect a Chair, Vice Chair, Secretary and Treasurer to conduct business
2. All officers must be PFSC Individual members
3. The division will submit a "Division Credential Sheet" to the state office each calendar year to be eligible to have a seat on the PFSC Board
4. The division will elect a representative to serve on the PFSC Board of Directors to vote on state Federation activities. (This representative must be a PFSC Individual member)
5. If the division treasurer has not received dues from a county by February 15th of each calendar year, the treasurer must notify the division chair of the counties that have not paid their dues
6. The chair of the division will be responsible for contacting those counties within the division that have not paid their dues prior to March 1st. Counties that have not paid their clubs' division dues are not recognized on the state level as being affiliated, even if state dues have been paid.
7. The division will be responsible for validating each county's credential sheets within that division. The division must notify the state office prior to the Spring Convention of any County not in compliance.
8. Each division will elect/appoint a member to each of the standing Committees. These members represent the division at the state level. The division chair shall send a list of the names, addresses and phone numbers of each committee member to the state office. The PFSC President appoints the state committee chair of each committee.



STANDARDS FOR AFFILIATION

The Articles of Incorporation of the PFSC state: "The corporation shall be formed for the purpose of conserving the natural resources of Pennsylvania and the United States; to provide adequate laws to prevent the exploitation of natural resources, forests, waters, lands, game, fish, and songbirds; to combine and coordinate the conservation activities of all sportsmen groups into one state federation; and to adopt and practice a code of ethics in sportsmanship acceptable to the citizens of Pennsylvania and the United States, to sponsor educational programs designed to inform our citizens in methods of gaining the health-restoring advantages offered by participation in outdoor recreation – camping, boating, swimming, hunting and fishing; and to teach safe methods to pursue in sports activities to prevent accidents and to preserve human life."

These Standards of Affiliation have been adopted by the Board to insure the accomplishment of our purpose and to conform to the responsibility and authority of the Board as described in Article II of the Bylaws.

BE PRIMARILY DEVOTED TO THE WISE USE and CONSERVATION OF WILDLIFE AND NATURAL RESOURCES, PROMOTING and PROTECTING OUR OUTDOOR HERITAGE and 2ND AMENDMENT RIGHTS

SUPPORT THE MISSION OF THE FEDERATION

Mission: The mission of the PFSC is to protect and promote hunting, fishing, trapping and related sportsmen's rights and privileges, to secure and defend our 2nd Amendment Rights as guaranteed by the Constitution of the United States of America; to protect from degradation and waste the natural resources of the Commonwealth of Pennsylvania and the United States of America; to encourage, advise, and assist other groups, organizations, elected officials, government agencies, private businesses and corporations to further sportsmen issues.

Mission Statement: The mission of The Pennsylvania Federation of Sportsmen's Clubs Inc. is to provide a state-wide, united voice for the concerns of all sportsmen and conservationists; to insure their rights and interests are protected, and to protect and enhance the environment and our natural resources.

SUPPORT FOR THE PURPOSES, OBJECTIVES AND POLICIES OF THE FEDERATION

Purposes and Objectives

A. Wildlife & Natural Resource Conservation

To encourage, conduct and support scientific and technical studies in the field of fish and wildlife conservation, to assist in the design and development of scientifically sound fish and wildlife programs for the management of wildlife and hunting/fishing/trapping, and to demonstrate the constructive role that sportsmen play in the conservation of fish and wildlife and our natural resources. To promote hunting, fishing and trapping as necessary & ethical tools utilized in wildlife management.

B. Conservation Education

To encourage, conduct and support educational programs on fish and wildlife conservation, ecology, and natural resource management that include a demonstration of the constructive role that hunting, fishing and trapping play in natural resource conservation and land and water management.

STANDARDS FOR AFFILIATION

Continued

C. 2nd Amendment Rights Protection

To promote and protect the rights to keep and bear arms as called for in the Constitution of the United States of America and the Constitution of the Commonwealth of Pennsylvania; assist in promoting gun safety and responsible gun ownership and use; and promote the shooting sports.

D. Cooperation and Support Assistance

To provide support and cooperation to other organizations, individuals, and agencies pursuing the same or similar goals of the PFSC. To provide leadership and advocacy for the enhancement of fish and wildlife resources for the benefit of all hunters, anglers and conservationists, by working directly with our resource agencies and legislature.

GOOD PUBLIC IMAGE AND REPUTATION

The organization's positions, programs and activities ensure that the affiliate is perceived as effective and credible on conservation matters by the organization's own membership, state resource agencies, the press, legislators, other conservation organizations and the public at large.

GOOD LEADERSHIP

The organization has established policies, job descriptions and procedures for volunteer leaders and takes appropriate actions to insure the conscientious pursuit of duties by officers, directors, and members.

BROAD MEMBERSHIP BASE

The organization recruits individual and organizational members from a broad spectrum reflecting ethnic and cultural diversity, and member privileges are open to any individual and/or member groups reflecting diverse interests and points of view, provided that those groups and individuals recruited, be dedicated to resource conservation, environmental protection, the wise use of our natural resources and the promotion and protection of our outdoor heritage and 2nd Amendment Rights.

SOUND BUSINESS MANAGEMENT

The organization maintains compliance with Internal Revenue Code, as well as state tax, nonprofit corporation, charitable solicitation, environmental laws, State and Federal employment laws, Postal Regulations, Civil Rights Act, and other applicable laws.

ACTION ON STATE AND NATIONAL CONSERVATION ISSUES

The organization has developed a timely and effective system of gathering, considering and disseminating information on national and state conservation issues.

DELEGATE RESPONSIBILITIES

THE CLUB DELEGATE / ALTERNATE DELEGATE

1. Work to become totally informed about PFSC, its activities, member services, fund raisers, financial status and positions on conservation issues. It is the club delegate's responsibility to keep the club members informed of PFSC activities and their role in the PFSC.
2. Attend all County Federation meetings and participate in them, representing the interests of their club.
3. Make a formal report to club members during regular club meetings, announcing actions and activities at the county, division and state levels. Such information will be obtained from county and division meetings, state conventions, mailings from the PFSC State Office, PFSC publications and emails.
4. Responsible for maintaining correct addresses for delegates and club officers with the State Office.
5. Learn the resolution process and have available the proper forms for presenting resolutions from the club. If a resolution passes, it is the responsibility of the delegate to take action to further the intent of the resolution.
6. Receive resolutions of other clubs in the county, present them for a vote at the club meeting and then represent the club's position at the county meeting when such resolutions are acted upon. Resolutions are sent to: PFSC Board members, county delegates, club delegates and individual members.
7. Make and maintain contact with local legislators. Respond to "calls to action" from the PFSC State Office, which urge statewide efforts on pending legislation. This response can take the form of writing, emailing and phoning state legislators, and arranging for other club members to do the same.
8. Make and maintain contact with local media and help to promote and publicize issues and activities on a local basis.
9. Share mailings, notices and other information with the club members on a regular basis.
10. Communicate membership concerns/questions to the state office.
11. Ensure membership dues and credential forms are filled out and submitted to the county by February 1st each year.

THE COUNTY DELEGATE / ALTERNATE DELEGATE

1. Work to become totally informed about PFSC, its activities, member services, fund raisers, financial status and positions on conservation issues. It is the club delegate's responsibility to keep the club members in formed of PFSC activities and their role in the PFSC.
2. Attend all County Federation meetings so as to be knowledgeable of the Club's concerns and positions on issues.
3. Attend all Division Federation meetings and participate in them, representing the interests of their county.
4. Attend all State Federation Conventions and participate in them, representing the interests of their county.
5. Make a formal report at County meetings announcing activities at the Division and State levels.
6. Learn the resolution process and be capable of presenting their County resolutions at the State Conventions.
7. Receive resolutions from other counties, present them for a vote at their county meeting, and then represent their county's position at State Conventions.
8. Provide each member club with up-to-date information on county, division and state activities. At a minimum, each club should receive a report immediately after each Convention.

These standards were last amended by the PFSC Board of Directors
March 2011

COMMITTEE MEMBER RESPONSIBILITIES

COMMITTEE REPRESENTATIVES

Each Division shall elect/appoint a member to all standing committees, who shall:

1. Regularly communicate with the Chair of the Committee so as to be knowledgeable of the issues
2. Attend all Division meetings to update attendees of current issues
3. Communicate on a regular basis with representatives from the member counties to assure that each county is updated and understands the issues
4. Attend all State Conventions and represent the Division at Committee meetings

PFSC Procedure for Endorsement of Candidates for Commissioners to the Pennsylvania Game Commission and/or Fish and Boat Commission

1. Candidate or candidates supply a written resume to their division, requesting the Division's endorsement.
2. Division officers should interview all interested candidates to determine their qualifications for a commission appointment.
3. Candidate/candidates are endorsed by his/her Division at a regular or special meeting. The endorsing Division Chair contacts all PFSC Division chairs regarding their endorsement of said candidate/candidates. This contact must be made in writing, with the candidate's/candidates' resume attached. A copy of this correspondence and attachments should be forwarded to the PFSC office to be put on file.
5. The sponsoring Division contacts a state Senator within their division to present the candidate's/candidates' name(s) to the Governor.
6. Upon receipt of a letter from the sponsoring division endorsing said candidate/candidates, the PFSC President will then write a letter to the Governor endorsing said candidate/candidates, with copies forwarded to the Senate Game and Fisheries Committee members.
7. Upon submission of a PFSC statewide endorsement to the Governor, copies of the letter of endorsement are forwarded to the PFSC County Presidents in order for them to contact their local Senators requesting support of said candidate/candidates.

HOW TO WRITE A RESOLUTION

A resolution is actually a statement of facts that ends with a call for action or requests that action be taken on a particular subject.

For example:

THE TITLE	--	Subject of Resolution
1ST WHEREAS	--	First Statement of Fact
2ND WHEREAS	--	Second Statement of Fact
3RD WHEREAS	--	Third Statement of Fact

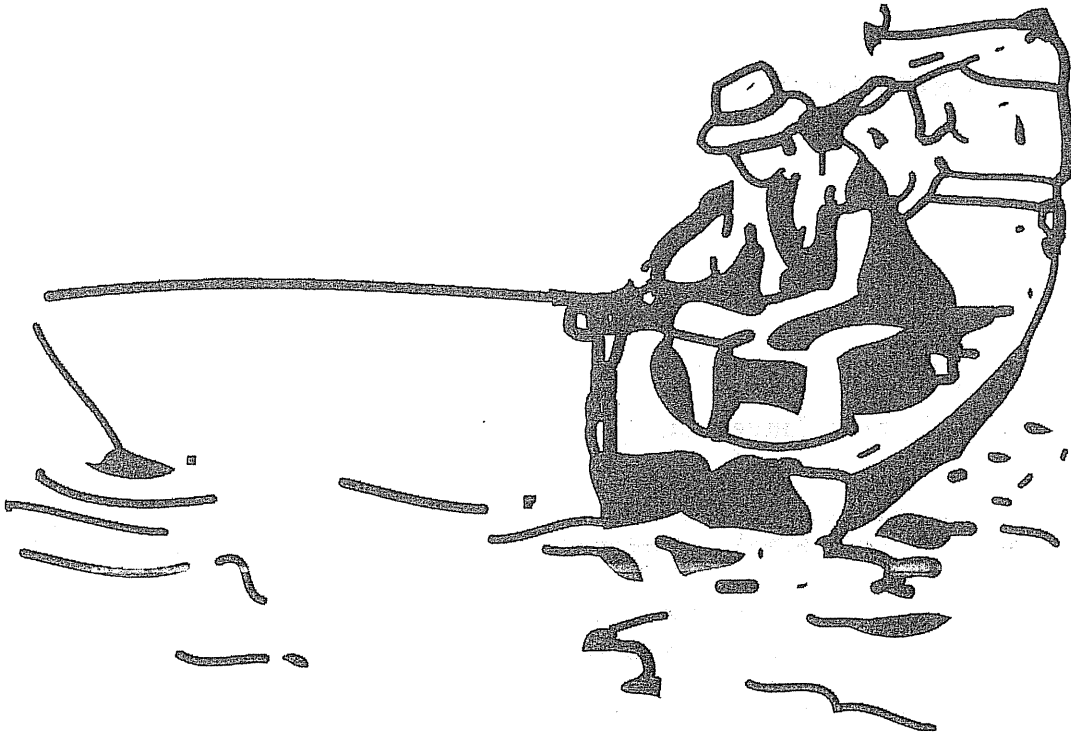
The 1st "NOW BE IT RESOLVED" should contain:

- The name of the organization taking the action
- The date of the action
- The location of the action
- The action to be taken

The 2nd "NOW BE IT RESOLVED" should contain:

- Any further actions to be taken
- Instructions for the distribution of the resolution

Following this page is a PFSC Conservation Resolution form
It may be photocopied for submission



PENNSYLVANIA FEDERATION OF SPORTSMEN'S CLUBS, INC.

CONSERVATION RESOLUTION

Originating in a Local Club and Seeking

- (1) COUNTY FEDERATION SUPPORT
- (2) PENNSYLVANIA FEDERATION OF SPORTSMEN'S CLUBS SUPPORT

Name of Local Club	Date	Club Secretary SIGNATURE
--------------------	------	--------------------------

Club Secretary (typed)	Club Secretary's Address	Club Secretary Phone
------------------------	--------------------------	----------------------

APPROVED BY:

Name of County Federation	Date	County Secretary SIGNATURE
---------------------------	------	----------------------------

County Secretary (typed)	County Secretary's Address	County Secretary Phone
--------------------------	----------------------------	------------------------

WHEREAS:

THEREFORE BE IT RESOLVED:

(Do not write below this line)

Acted upon by the PFSC at the Convention of _____ and disposed of in the following manner:
(date)

_____	_____	_____	Results: _____	Signature of State Secretary
Yeas	Nays	Abstained	approved, Rejected, Tabled)	

INSTRUCTIONS FOR SUBMISSION

PLEASE TYPE ALL RESOLUTIONS * MAIL SIGNED COPY TO:

Executive Director, PFSC, 2426 N. Second St., Harrisburg, PA 17110-1104.

* Resolutions must be submitted to PFSC office no later than June 1st for approval at Fall Convention and January 1st for Spring Convention.

All Resolutions (mailed copies) must be signed by the Club Secretary and the County Secretary

COMMUNICATION CONNECTION

The State Office staff have the responsibility for maintaining communications with all of the organization's membership. The following is a breakdown of what information goes where.

1. INTERNAL COMMUNICATIONS

- PFSC Board of Directors
- Endowment Board of Directors

2. LEGISLATIVE UPDATES AND CALLS TO ACTION

- All of the above
- County delegates, club delegates, individual members with email addresses

3. SPECIAL MAILINGS (conventions registrations, etc.)

- All Boards of Directors
- Club Delegate & Presidents
- County Delegates & Presidents

4. PFSC BOARD MINUTES AND GENERAL SESSION MINUTES

- PFSC Board of Directors
- County Delegates
- Any club or individual member if requested

5. PFSC RESOLUTIONS

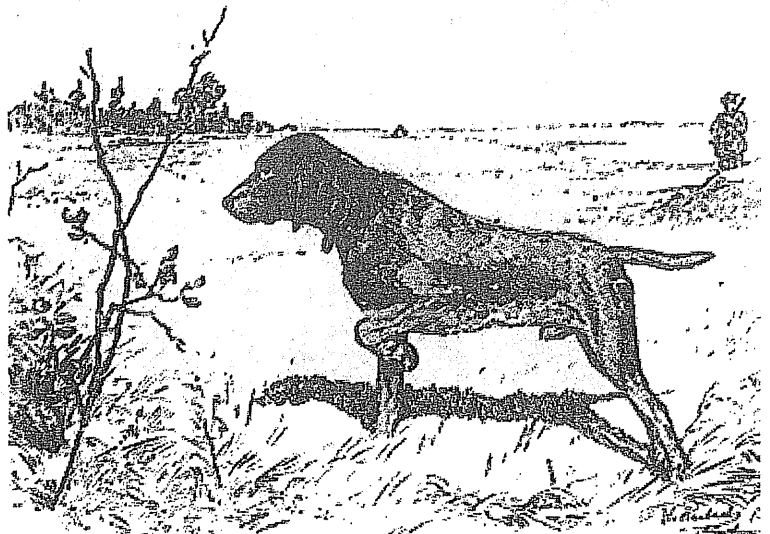
- PFSC Board of Directors
- County Delegates
- Club Delegates
- Individual Members

6. PFSC ON TARGET

- PFSC Board of Directors
- PWF Board of Directors
- PFSC Individual Members
- County Delegates, Presidents, Secretaries
- Club Delegates, Presidents, Secretaries

7. PFSC E-mail News Updates & Alerts

- Members of Affiliated Clubs
- Board Members
- County Delegates
- Individual Members



DATES TO REMEMBER

CONVENTIONS

FALL - September
SPRING - March

RESOLUTIONS

JANUARY 1ST is the deadline for SPRING Convention
JUNE 1ST is the deadline for FALL Convention

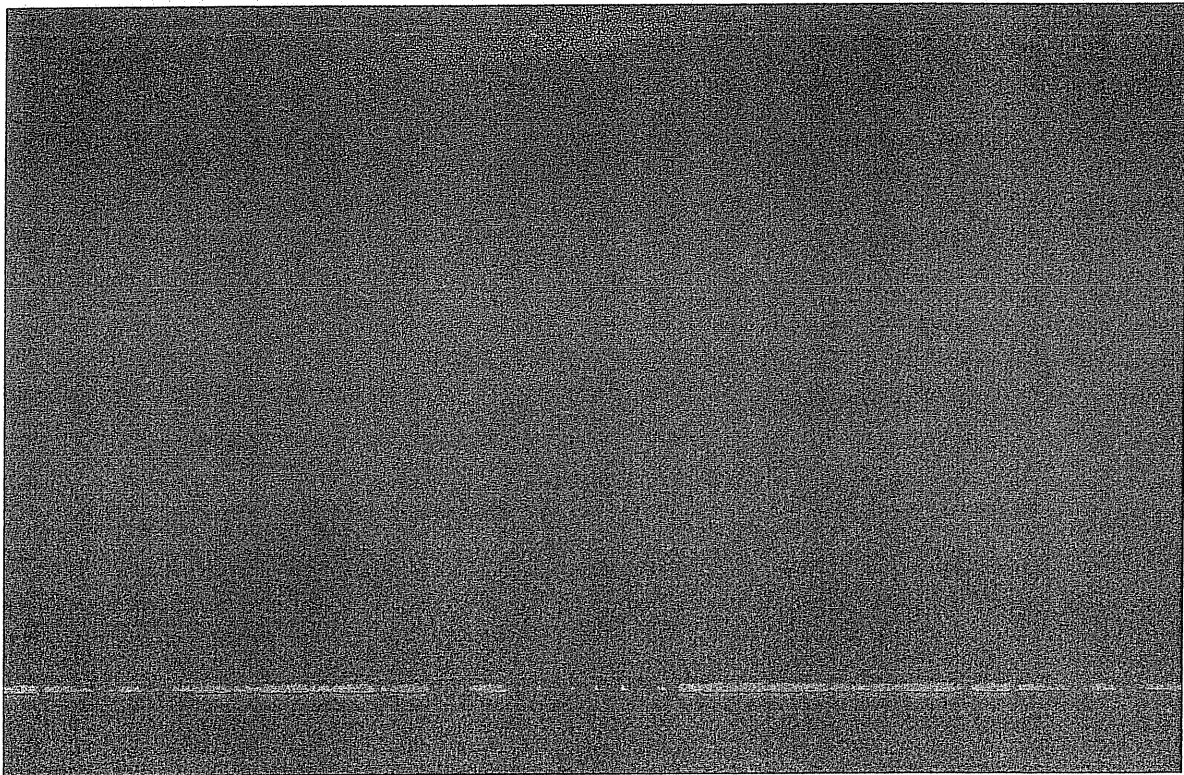
DUES & CREDENTIALS

CLUB -- Dues deadline is FEBRUARY 1 (send to county)
COUNTY -- Dues deadline is FEBRUARY 15 (send to state & division)

COUNTY CREDENTIALS completed & returned to state office -- Dead
line is March 1st for eligibility to vote at spring convention.

PFSC BOARD MEETINGS

January, March, June and September



Protecting our Outdoor Heritage for our Next Generation

Pennsylvania Federation of Sportsmen's Clubs
BOARD OF DIRECTORS

2011

President *

Ted Onufrak
PO Box 21
Mingoville, PA 16856
814-238-7005
tonufrak@uplink.net

1st Vice President *

Chuck Lombaerde
110 Elena Lane
Milford, PA 18337
570-409-0605
brody243@optonline.net

2nd Vice President *

Lowell Graybill
970 S. Milton Grove Rd.
Elizabethtown, PA 17022
717-653-4785
lowell.graybill@binkleyhurst.com

Central Division

Gary Lewis
18 Chamber St.
Danville, PA 17821
570-764-0723
glewis@geisinger.edu

North East Division

John Ord
620 Tower Rd
Susquahanna, PA 18847
570-853-2815
scfederation@gmail.com

South Central Division

Vacant

Southern Division

Dennis Fillmore
934 Valley St.
Enola, PA 17025
717-732-6540
dennyfill@aol.com

Past President *

Mike Protz
93 Valley View Ave.
Hallstead, PA 18822
570-879-2397
mdmprotz@epix.net

Secretary *

Rocco Ali
P.O. Box 385
North Appollo, PA 15673
724-478-4303
roca_1@excite.com

Treasurer *

Dorothy Protz
93 Valley View Ave.
Hallstead, PA 18822
570-879-2397
mdmprotz@epix.net

North Central Division

Devin DeMario
1024 METZ AVE.
STATE COLLEGE, PA 16801
724-972-9461
devindemario@yahoo.com

North West Division

Steve Preston
21 McEwen Rd.
Mercer, PA 16137
724-813-5641
sgbc@zoominternet.net

South East Division

Lee Marsh
1363 N. Cottonwood Rd.
Danielsville, PA 18038
610-767-7543
lejlmars@msn.com

South West Division

Bob Rittenhouse
5576 Florida Ave.
Bethel Park, PA 15102
412-833-5697
ratface@comcast.net

Membership Application

Membership Application

Your Name: _____

Your Name: _____

Address: _____

Address: _____

City/St./Zip: _____

City/St./Zip: _____

County: _____

County: _____

Phone # _____

Phone # _____

E-mail: _____

E-mail: _____

Check appropriate membership level

Check appropriate membership level

____ \$25 Individual Member

____ \$25 Individual Member

____ \$50 Contributing Member

____ \$50 Contributing Member

____ \$300 Life Member

____ \$300 Life Member

____ \$10 Next Generation Member (Under 21)* Birthday: _____

____ \$10 Next Generation Member (Under 21)* Birthday: _____

____ \$15 E-Membership (Receive On Target & all mailings via e-mail)

____ \$15 E-Membership (Receive On Target & all mailings via e-mail)

____ Additional Donation \$ _____

____ Additional Donation \$ _____

____ Add me to your email news list

____ Add me to your email news list

Email: _____

Email: _____

- Members will receive PFSC's official publication On Target
- Representation through Member at Large

- Members will receive PFSC's official publication On Target
- Representation through Member at Large

Please enclose payment and application and SEND TO:

Please enclose payment and application and SEND TO:

PFSC
 2426 N. 2nd Street
 Harrisburg, PA 17110
 717-232-3480
 e-mail: info@pfsc.org
 www.pfsc.org

PFSC
 2426 N. 2nd Street
 Harrisburg, PA 17110
 717-232-3480
 e-mail: info@pfsc.org
 www.pfsc.org